





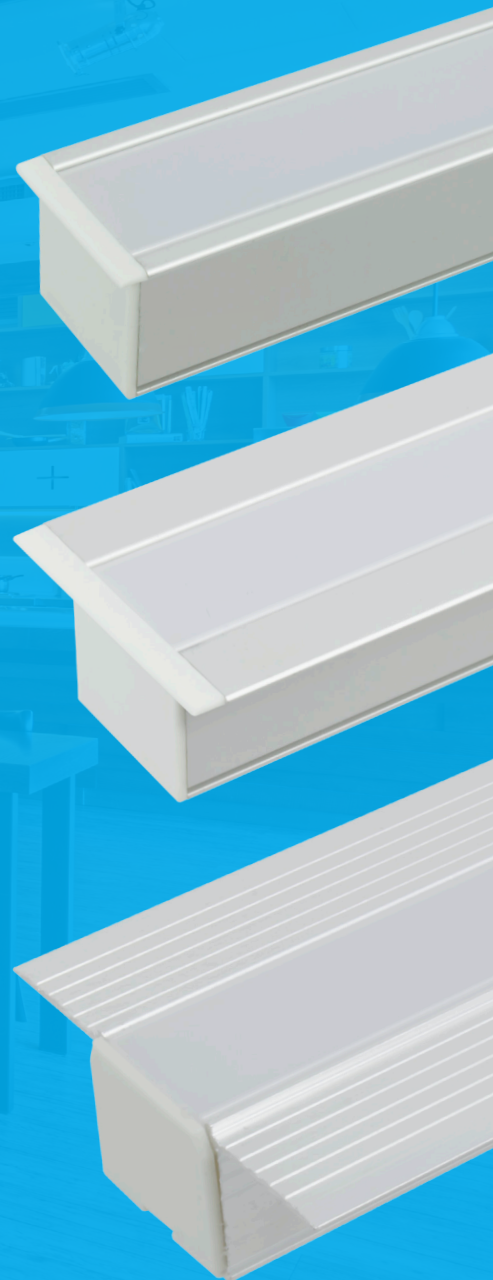
TRULUX™ Drywall Channel

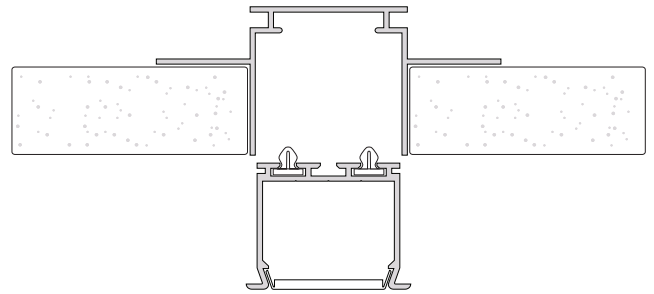
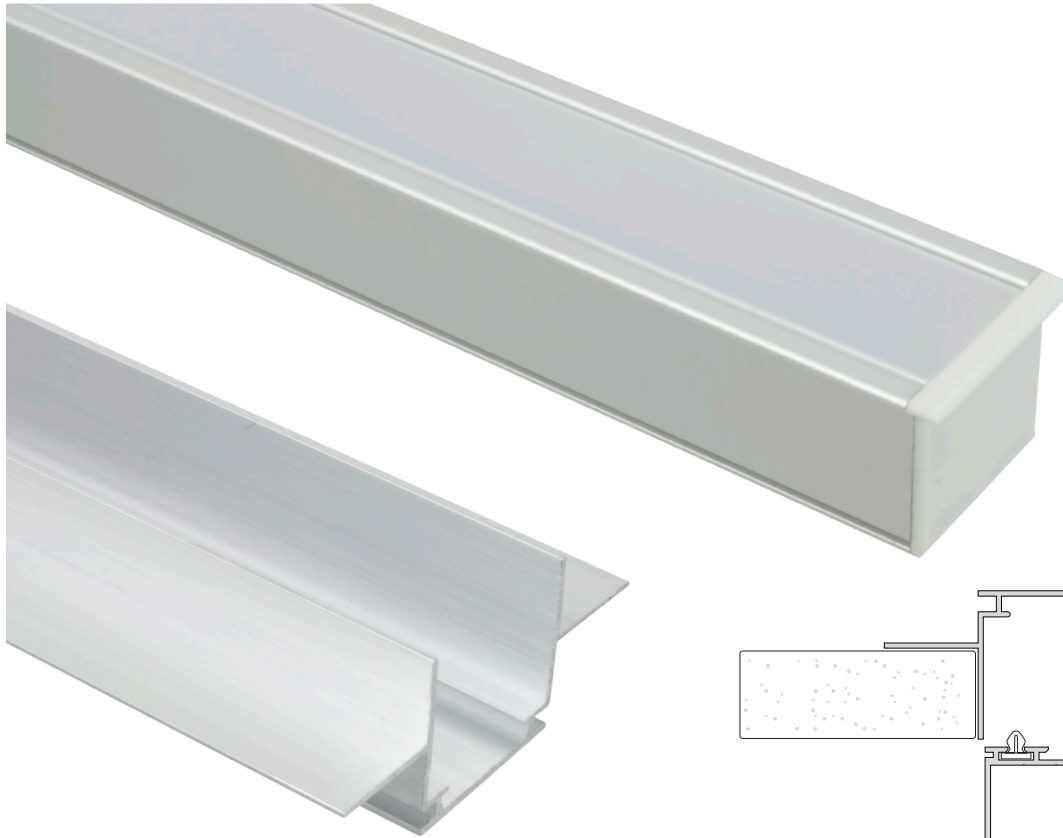
Create clean lines of light using recessed drywall extrusions in three variations, each sold in 2-meter lengths. For new construction, install the rough-in housing first, choosing between 1/2" and 5/8" versions depending upon drywall thickness, then use with the Mini Flange insert and the type of tape light best suited for your application. For remodel applications, use either the Standard Flange with mounting clips; or the Invisible Slot. All three versions accommodate every type of Trulux tape light available, including the new Double Row Tunable.

Mini Flange pg. 68

Standard Flange pg. 70

Invisible Slot pg. 71





Features

- Made of lightweight double anodized aluminum
- Frosted lens protects light source while evenly diffusing light
- Field cuttable housing, insert, and lens
- Aluminum provides excellent heat dissipation
- Mounting clips and ends are available
- Compatible with all Trulux Tape Light

Available Lengths

78-3/4" (2 meter)

Available Finishes



Anodized Aluminum

Compatible Tape Light

- Trulux Single Color
- Trulux Tunable CCT
- Trulux RGB / RGB+WW

TRULUX™ Mini Flange Slot Channel

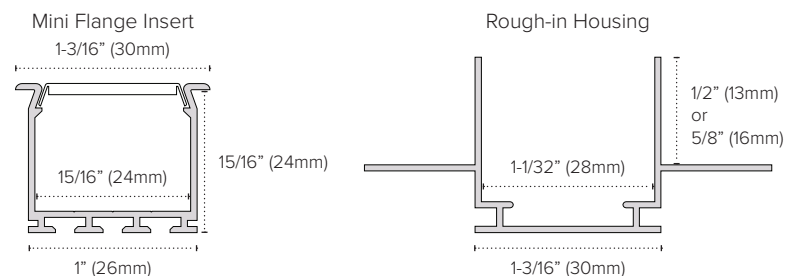
Make finished 'Slot' Fixtures that are modern and stylish. The 1/8" flanged edge nearly disappears for a clean 'line of light' look. For Slots that don't go floor to ceiling, use the PE-SLOT-END at each end, framing the top and bottom with the small 1/8" lip. Use PE-FC-ENDs for Slots that do go from floor to ceiling. Three pairs of clips per meter are needed to secure the two parts together, and the lens snaps on as the final piece.

Best suited applications:

Ceilings, wall slots, hallways, corridors, lobbies, theaters, accent lighting

Ordering Information

PE-D.5-2M	1/2" Drywall Rough-in Housing
PE-D.6-2M	5/8" Drywall Rough-in Housing
PE-SLOT-2M	Mini Flange Insert
PE-SLOTLENS-2M	Frosted Polycarbonate UV Lens
PE-SLOT-END	Mini Flange Slot End Cap
PE-SLOT-CLIP	Mini Flange Slot Clip (Required)
PE-FC-END	Drywall Slot Housing End Cap





MINI FLANGE SLOT
TRULUX EXTRUSIONS

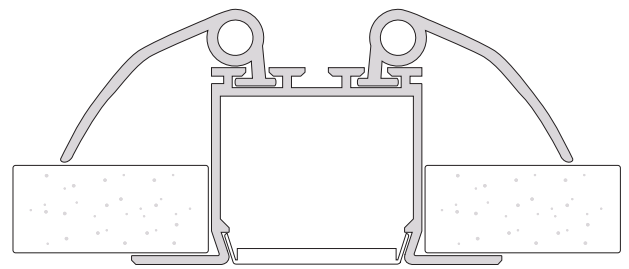
TASK LIGHTING

DOWNLIGHTING

LINEAR LIGHTING

ARCHITECTURAL LIGHTING

POWER SUPPLIES



Features

- Made of lightweight double anodized aluminum
- Frosted lens protects light source while evenly diffusing light
- Field cuttable extrusion and lens
- Aluminum provides excellent heat dissipation
- Mounting clips and ends are available
- Compatible with all Trulux Tape Light

Available Lengths

78-3/4" (2 meter)

Available Finishes



Anodized Aluminum

Compatible Tape Light

- Trulux Single Color
- Trulux Tunable CCT
- Trulux RGB / RGB+WW

TRULUX™ Standard Flange Slot Channel

Remodeling applications can use the Standard Flange with spring clips in pairs (PE-DFSLOT-CLIP is a single), to cover a generous 3/8" along each side; or use the Invisible Slot on the facing page. The PE-DFSLOT-END (sold separately) finishes the ends, top and bottom, then snap in the slot lens over the type of tape light you choose.

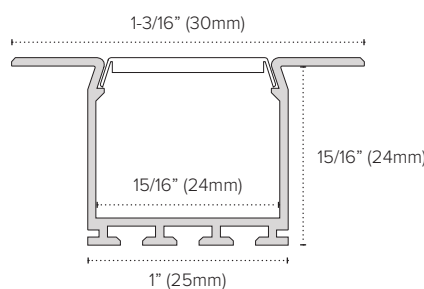
Best suited applications:

Ceilings, wall slots, hallways, corridors, lobbies, theaters, accent lighting

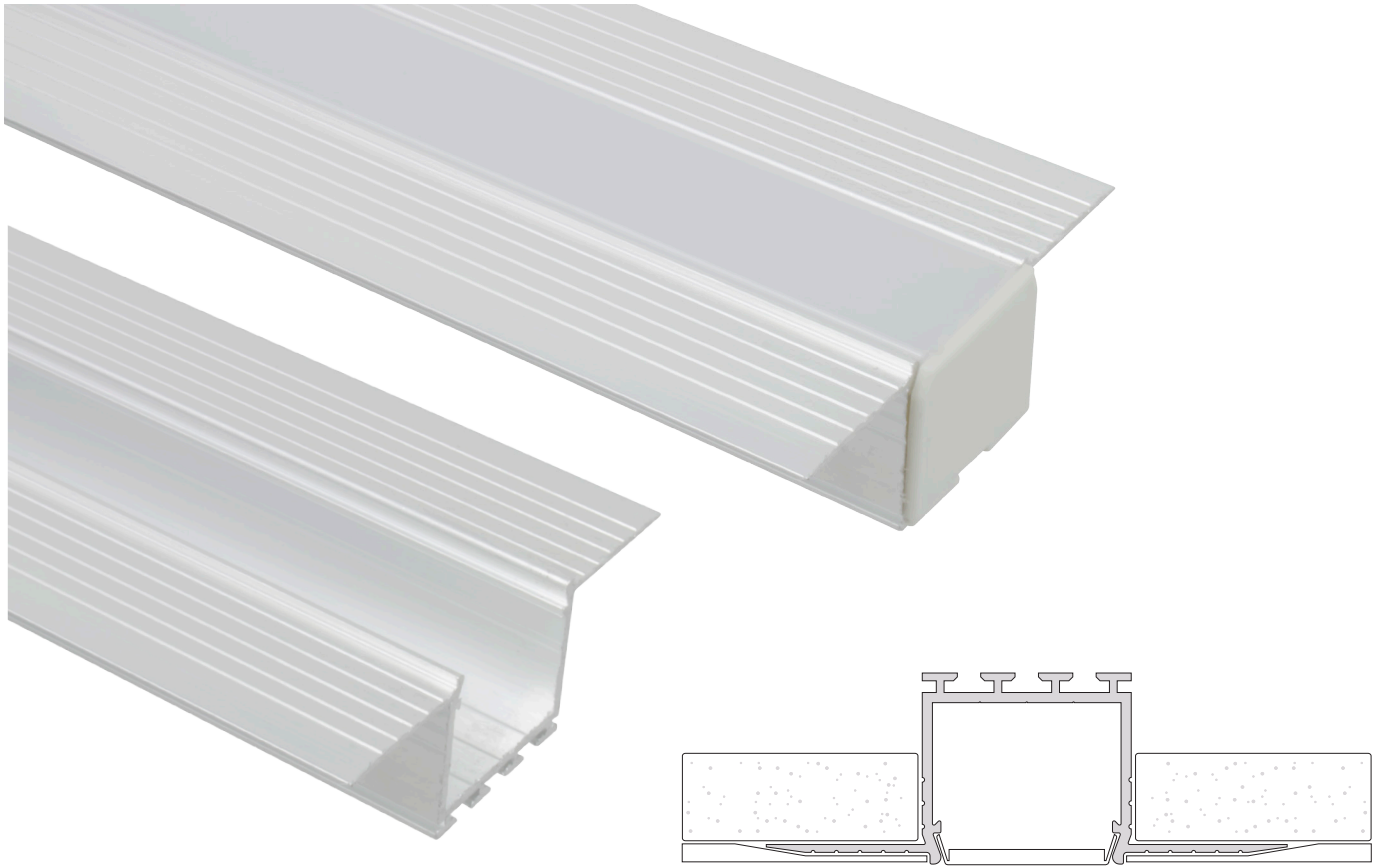
Ordering Information

PE-DFSLOT-2M*	Flange Slot Aluminum Channel
PE-SLOTLENS-2M	Frosted Polycarbonate UV Lens
PE-DFSLOT-END*	Flange Slot End Cap
PE-DFSLOT-CLIP*	Flange Slot Spring Clip

*Standard Flange Slot Channel is available as special order only. Please allow up to 2 weeks for order processing.



Spring clips for remodel applications



Features

- Made of lightweight high quality aluminum
- Frosted lens protects light source while evenly diffusing light
- Field cuttable extrusion and lens
- Aluminum provides excellent heat dissipation
- Mounting clips and ends are available
- Compatible with all Trulux Tape Light

Available Lengths

78-3/4" (2 meter)

Available Finishes



Anodized Aluminum

Compatible Tape Light

- Trulux Single Color
- Trulux Tunable CCT
- Trulux RGB / RGB+WW

TRULUX™ Invisible Slot Channel

Achieve a slim, clean edge in remodel slots, with the Invisible Slot Channel. This is a screw or glue down high quality aluminum extrusion without a separate insert, so you'll need to cover the channel while you're doing any of the mud work, texturing and painting. End caps finish each end and the lens snaps into the one-piece channel.

Best suited applications:

Ceiling/wall slots, hallways, corridors, lobbies, theaters, and accent lighting

Ordering Information

PE-INV SLOT-2M	Invisible Slot Aluminum Channel
PE-SLOTLENS-2M	Frosted Polycarbonate UV Lens
PE-INV SLOT-END	Invisible Slot End Cap

