





## TRULUX™ Recessed Extrusions

Combine extrusions with most versions of Trulux Tape Light to make recessed line of light. The two Flange extrusions, the walk over Helm and drive over Paver extrusions are designed for recessed applications only. Both Universal and Mini Universal can be either recessed or surface mounted.

Double Flange pg. 74

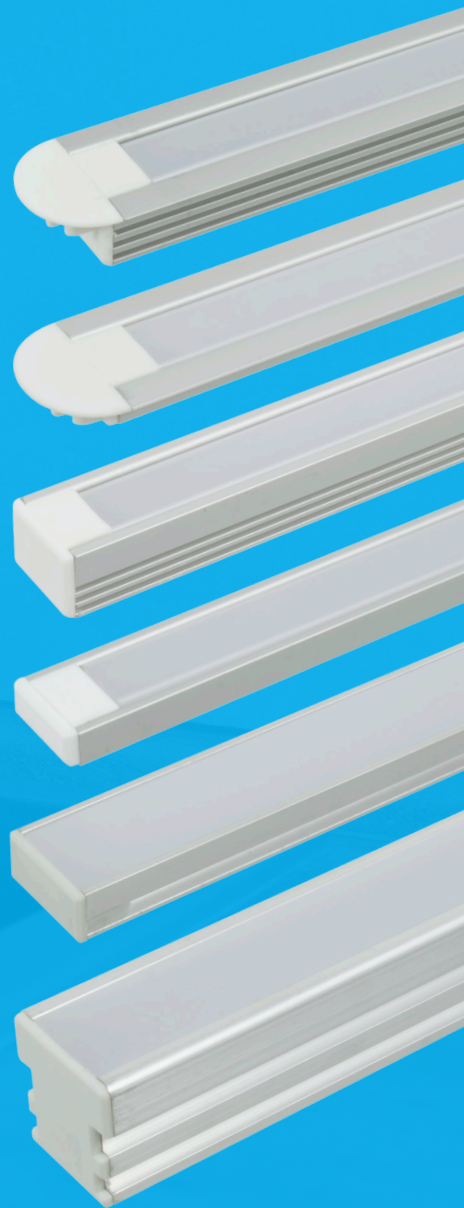
Mini Double Flange pg. 75

Universal pg. 76

Universal Mini pg. 77

Helm pg. 78

Paver pg. 80





## Features

- Made of lightweight double anodized aluminum
- Frosted lens protects light source while evenly diffusing light
- Field cuttable extrusion and lens
- Aluminum provides excellent heat dissipation
- Optional end caps available
- Compatible with most Trulux Tape Light

## Available Lengths

39-3/8" (1 meter)

## Available Finishes



Anodized Aluminum

## Compatible Tape Light

- Trulux Single Color
- Trulux Tunable CCT (excludes Double Row)
- Trulux RGB

## TRULUX™ Double Flange Extrusion

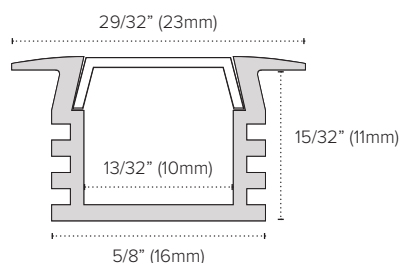
Hide edges when needed with the recessed Double Flange extrusion designed for use in recessed channels 5/8" wide by 1/2" deep. Two versions of end caps allow a clean edge at the power end and opposite end, while the UV resistant/flame retardant lens protects the tape light within. Compatible with all versions of tape except Double Row.

### Best suited applications:

Stairs, handrails, display shelving and cases, niche and accent lighting

## Ordering Information

<b>PE-AA2DF-1M</b>	Double Flange Aluminum Extrusion
<b>PE-UVLENS-1M</b>	Frosted Polycarbonate UV Lens
<b>PE-AA2DF-FEED</b>	Double Flange End Cap w/hole
<b>PE-AA2DF-END</b>	Double Flange End Cap





## Features

- For shallow recessed channels
- Made of lightweight double anodized aluminum
- Frosted lens protects light source while evenly diffusing light
- Field cuttable extrusion and lens
- Aluminum provides excellent heat dissipation
- Optional end caps and mounting clips available
- Compatible with most Trulux Tape Light

## Available Lengths

39-3/8" (1 meter)

## Available Finishes



Anodized Aluminum

## Compatible Tape Light

- Trulux Single Color
- Trulux Tunable CCT (excludes Double Row)
- Trulux RGB

## TRULUX™ Mini Double Flange Extrusion

Similar to the Mini, the Double Flange only needs a channel of only 1/4" depth. The Mini Double Flange is a recess mount only extrusion. It can be altered for IP65 use in wet locations. Use the frosted UV resistant/flame retardant lens, made of high quality polycarbonate material. Propylene caps finish the ends.

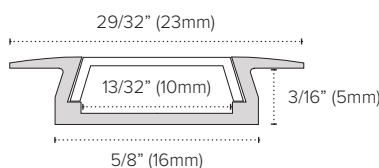
### Best suited applications:

Stairs, handrails, display shelving and cases, niche and accent lighting

## Ordering Information

<b>PE-AA1DF-1M*</b>	Mini Double Flange Aluminum Extrusion
<b>PE-UVLENS-1M</b>	Frosted Polycarbonate UV Lens
<b>PE-AA1DF-END*</b>	Mini Double Flange End Cap

\*Mini Double Flange Extrusion is available as special order only. Please allow up to 2 weeks for order processing.





## Features

- Can be recessed or surface mounted
- Made of lightweight high quality aluminum
- Frosted lens protects light source while evenly diffusing light
- Field cuttable extrusion and lenses
- Additional focusing lens available for 10° beam pattern control
- Optional end caps and mounting clips available
- Compatible with most Trulux Tape Light

## Available Lengths

39-3/8" (1 meter)

## Available Finishes



Anodized Aluminum

## Compatible Tape Light

- Trulux Single Color
- Trulux Tunable CCT (excludes Double Row)
- Trulux RGB

## TRULUX™ Universal Extrusion

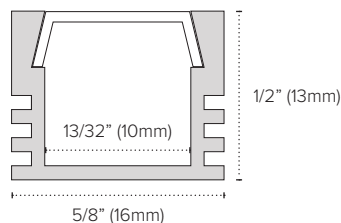
The rectangular profile of the Universal Extrusion requires a 5/8" wide by 1/2" deep channel if you recess mount it. It's also suitable for surface mount applications. Use either a UVLENS for general diffusion or a focusing lens for a narrow, focused beam. E-CLIPs are recommended for most surface applications.

### Best suited applications:

Stairs, handrails, display shelving and cases, niche and accent lighting

## Ordering Information

<b>PE-AA2-1M</b>	Universal Aluminum Extrusion
<b>PE-UVLENS-1M</b>	Frosted Polycarbonate UV Lens
<b>PE-FOCLENS-1M</b>	Beam Angle Focusing Lens (10° with Universal)
<b>PE-AA2-END</b>	Universal End Cap
<b>E-CLIP</b>	Surface Mount Clip



Focusing Lens



Surface Mount Clip



## Features

- Can be recessed or surface mounted
- Ultra low recessed profile design
- Made of lightweight high quality aluminum
- Frosted lens protects light source while evenly diffusing light
- Field cuttable extrusion and lenses
- Optional end caps and mounting clips available
- Compatible with most Trulux Tape Light

## Available Lengths

39-3/8" (1 meter)

## Available Finishes



Anodized Aluminum

## Compatible Tape Light

- Trulux Single Color
- Trulux Tunable CCT (excludes Double Row)
- Trulux RGB

## TRULUX™ Universal Mini Extrusion

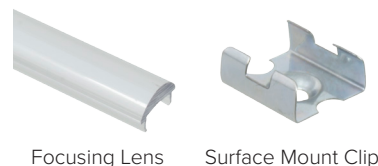
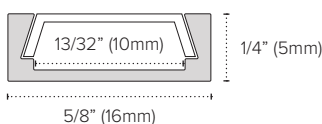
The low profile Universal Mini is a short version of the Universal and needs only a 1/4" depth if recessed. Use the frosted UV resistant/flame retardant lens, made of high quality polycarbonate material. End caps make a finished look. E-CLIPS are recommended for most surface applications, especially when mounted to the underside of a shelf or cabinet.

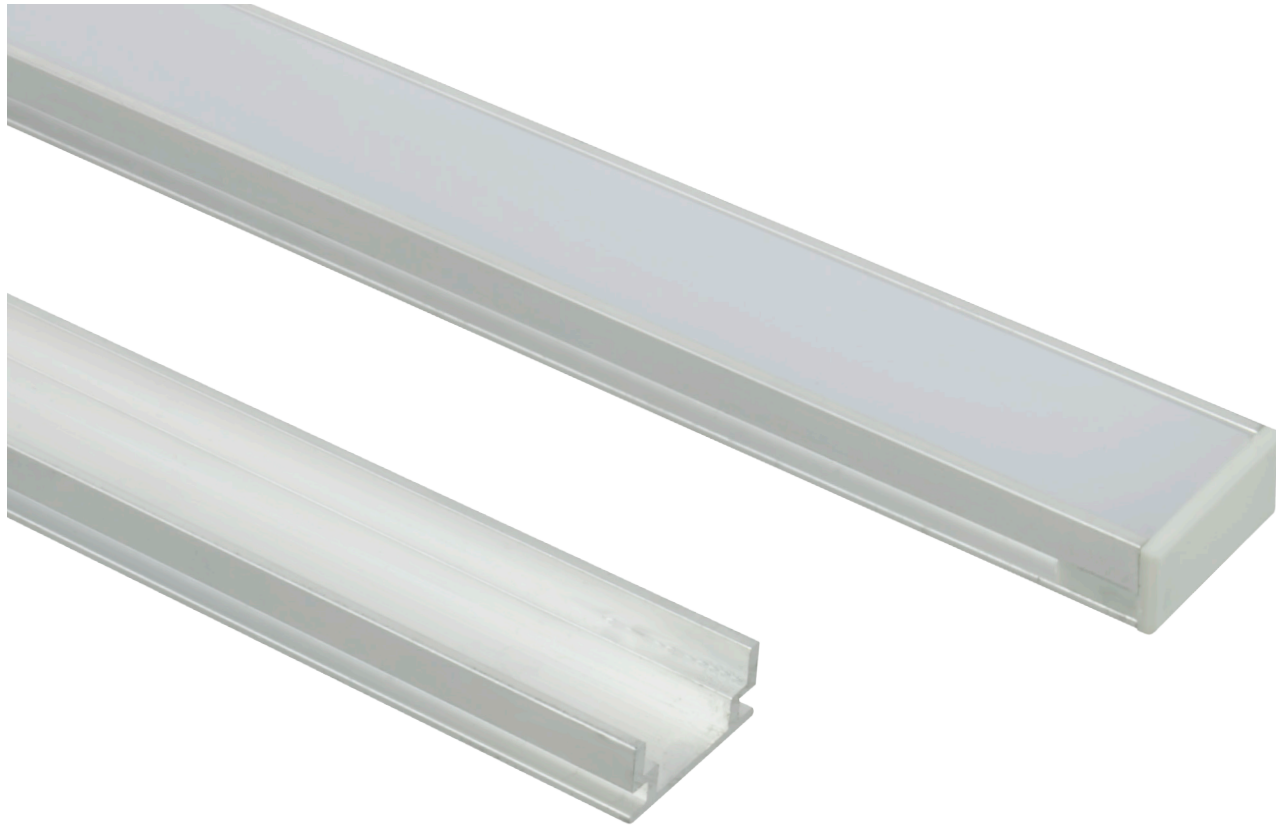
### Best suited applications:

Stairs, handrails, display shelving and cases, niche and accent lighting

## Ordering Information

<b>PE-AA1-1M</b>	Universal Mini Aluminum Extrusion
<b>PE-UVLENS-1M</b>	Frosted Polycarbonate UV Lens
<b>PE-FOCLENS-1M</b>	Beam Angle Focusing Lens (60° with Mini Universal)
<b>PE-AA1-END</b>	Mini End Cap
<b>E-CLIP</b>	Surface Mount Clip





## Features

- Low profile extrusion perfect for multiple flooring or in-grade interior and exterior applications
- Made of lightweight high quality aluminum
- Frosted lens protects light source while evenly diffusing light
- Field cuttable extrusion and lens
- Must be properly sealed with silicone for installations exposed to indoor or outdoor elements
- Compatible with most Trulux Tape Light

## Available Lengths

39-3/8" (1 meter)

## Available Finishes



Anodized Aluminum

## Compatible Tape Light

- Trulux Single Color
- Trulux Tunable CCT (excludes Double Row)
- Trulux RGB

## TRULUX™ Helm Extrusion

Specifically designed for flooring, the Helm is suitable for use with tile floors. However, when used with the PE-UVHELM-1M lens and end caps, and sealed properly, it creates many outdoor lighting opportunities, such as hardscape areas, curb marking, building facades, and paths. It is designed for walkover, not drive over, applications.

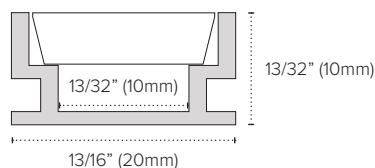
### Best suited applications:

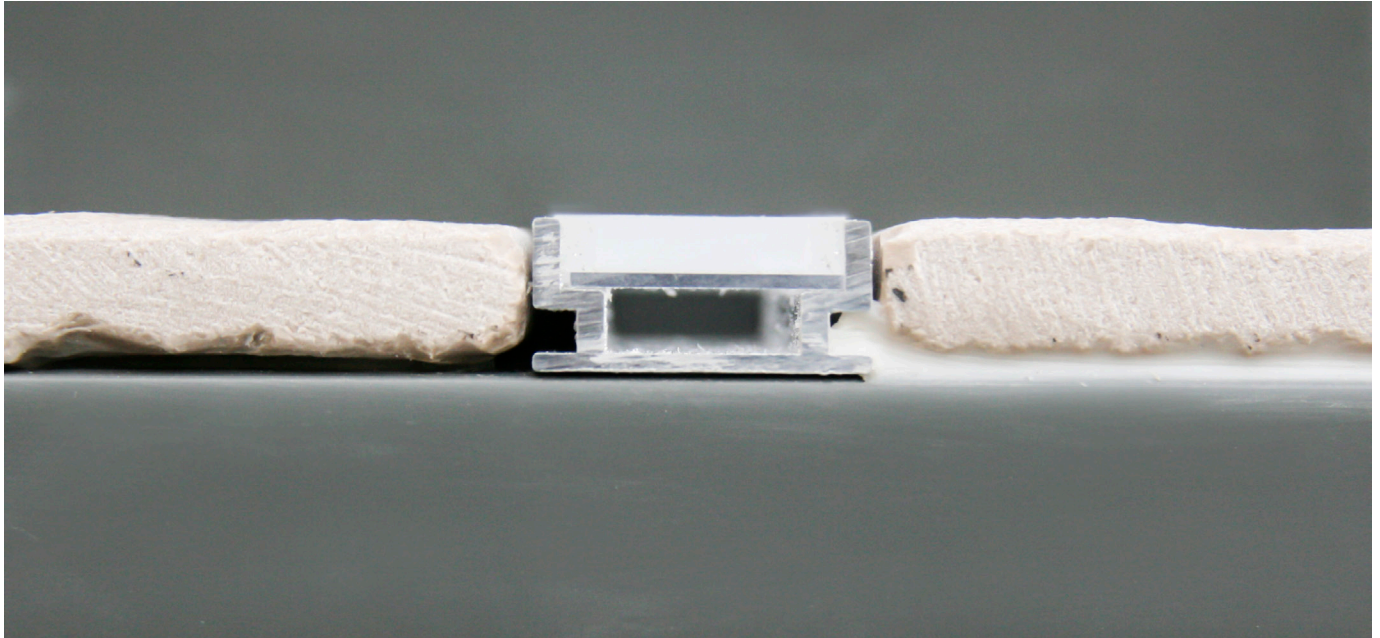
Interior/exterior walkways, tile/wood flooring, facades, hardscape

## Ordering Information

<b>PE-HELM-1M*</b>	Helm Aluminum Extrusion
<b>PE-UVHELM-1M*</b>	Frosted Polycarbonate UV Lens
<b>PE-HELM-FEED*</b>	Helm End Cap w/hole
<b>PE-HELM-END*</b>	Helm End Cap

\*Helm Extrusion is available as special order only. Please allow up to 2 weeks for order processing.





TRULUX EXTRUSIONS  
**HELM**

TASK LIGHTING

DOWNLIGHTING

LINEAR LIGHTING

ARCHITECTURAL LIGHTING

POWER SUPPLIES







## Features

- Perfect for multiple in-grade interior and exterior applications
- Can be used in flooring and in-grade applications where heavy loads may be applied (up to 2 ton rating)
- Made of lightweight high quality aluminum
- Frosted lens protects light source while evenly diffusing light
- Field cuttable extrusion and lens
- Must be properly sealed with silicone for installations exposed to indoor or outdoor elements
- Compatible with most Trulux Tape Light
- RoHS Compliant

## Available Lengths

39-3/8" (1 meter)

## Available Finishes



Anodized Aluminum

## Compatible Tape Light

- Trulux Single Color
- Trulux Tunable High Output
- Trulux RGB / RGB+WW

## TRULUX™ Paver Extrusion

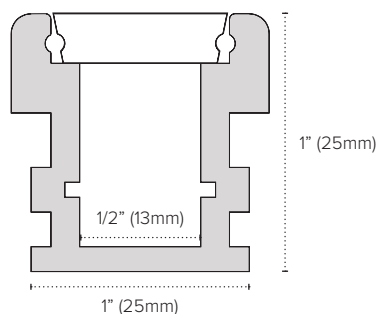
Robust and sturdy, the Paver is the drive over extrusion. Use for sidewalks, driveways, bike lanes, upscale parking lots and outdoor malls. Components (lens end caps) must be sealed properly for outdoor use. For in-ground installation and/or where exposed to heavy loads, special order installation accessories may be needed such as polystyrene foam board, sealants, waterproof couplers and adhesives.

### Best suited applications:

Exterior hardscape, landscaping, walkways, driveways, patios

## Ordering Information

<b>PE-PAVER-1M</b>	Paver Aluminum Extrusion
<b>PE-PAVERLENS-1M</b>	Frosted Polycarbonate Lens
<b>PE-PAVER-FEED</b>	Paver End Cap w/hole
<b>PE-PAVER-END</b>	Paver End Cap





**PAVER**  
TRULUX EXTRUSIONS

TASK LIGHTING

DOWNLIGHTING

LINEAR LIGHTING

ARCHITECTURAL LIGHTING

POWER SUPPLIES

