





TRULUX™ Surface Mount Extrusions

The Trulux Lighting System and the variety of extrusions make the customization options nearly limitless. These diverse extrusions create a myriad of combinations. Choose among these for task, stair safety, display, window framing and other specialty applications. For high output needs, consider the Pro30, Triple Stant, and Turbo series that house more than a single run of Tape Light.

[Pro30](#) [pg. 84](#)

[Triple Stant](#) [pg. 86](#)

[Single Stant](#) [pg. 87](#)

[Turbo](#) [pg. 88](#)

[Olin](#) [pg. 90](#)

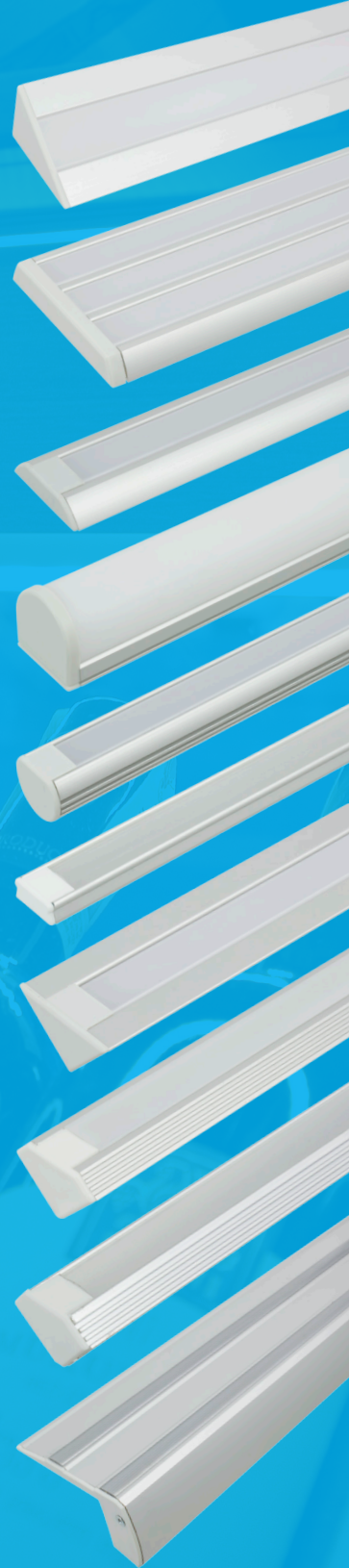
[Economy](#) [pg. 91](#)

[Pro 45](#) [pg. 92](#)

[Premium 45](#) [pg. 94](#)

[Economy 45](#) [pg. 95](#)

[Step](#) [pg. 96](#)





Features

- Pro 30 includes non-anodized mounting plate and double anodized faceplate insert
- Frosted lens protects light source while evenly diffusing light
- Field cuttable mounting extrusion, insert and lens
- Aluminum provides excellent heat dissipation
- End caps available for a tailored look
- Compatible with all Trulux Tape Light (Pro 30 can house side-by-side rows of single color tape)

Available Lengths

39-3/8" (1 meter)

Available Finishes



Anodized Aluminum

Compatible Tape Light

- Trulux Single Color
- Trulux Tunable CCT
- Trulux RGB / RGB+WW

TRULUX™ Pro 30 Extrusion

The robust angled Pro30 for indoor use, includes the corner mounting plate and the faceplate insert. Clips (four per meter), right and left ends, and lens make the complete fixture. The faceplate insert is double anodized aluminum and the mounting plate is non-anodized aluminum. Use under cabinets, in bar areas, and for retail displays. Either the long or short side can be mounted to the horizontal surface for window framing.

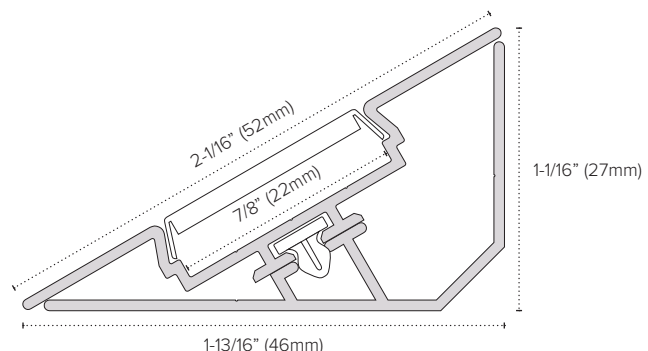
Best suited applications:

Task lighting, undercabinet, in-cabinet, display cases, shelving

Ordering Information

PE-PRO30-1M*	Pro 30 Corner Extrusion with Faceplate Insert
PE-PRO30LENS-1M*	Frosted Polycarbonate UV Lens
PE-PRO30-RIGHT*	Pro 30 End Cap (Right)
PE-PRO30-LEFT*	Pro 30 End Cap (Left)
PE-SLOT-CLIP*	Pro 30 Slot Clip

*Pro 30 Extrusion is available as special order only.
Please allow up to 2 weeks for order processing.







Features

- Made of lightweight double anodized aluminum
- Frosted lens protects light source while evenly diffusing light
- Field cuttable lenses and extrusion
- Aluminum provides excellent heat dissipation
- End caps available for a tailored look
- Compatible with most Trulux Tape Light

Available Lengths

39-3/8" (1 meter)

Available Finishes



Anodized Aluminum

Compatible Tape Light

- Trulux Single Color
- Trulux Tunable CCT (excludes Double Row)
- Trulux RGB / RGB+WW

TRULUX™ Triple Stant Extrusion

The Triple Stant Premium Extrusion, measuring 2-11/32" wide by 3/8" high, is popular for task lighting applications. The sloped shoulders arch more quickly to the mounting surface than the Single Stant, but still form a finished tailored look. With three rows of lighting, the Triple Stant should be used for applications where lots of light is needed, such as under cabinet and work areas and other task lighting applications.

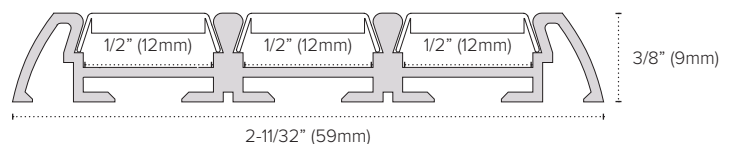
Best suited applications:

Display cases, task lighting, undercabinet, shelving, work areas

Ordering Information

PE-3STANT-1M*	Triple Stant Aluminum Extrusion
PE-UVSTANT-1M	Frosted Polycarbonate UV Lens
PE-3STANT-END*	Triple Stant End Cap

*Triple Stant Extrusion is available as special order only.
Please allow up to 2 weeks for order processing.





Features

- Made of lightweight double anodized aluminum
- Frosted lens protects light source while evenly diffusing light
- Field cuttable extrusion and lens
- Aluminum provides excellent heat dissipation
- End caps available for a tailored look
- Compatible with most Trulux Tape Light

Available Lengths

39-3/8" (1 meter)

Available Finishes



Anodized Aluminum

Compatible Tape Light

- Trulux Single Color
- Trulux Tunable CCT (excludes Double Row)
- Trulux RGB / RGB+WW

TRULUX™ Single Stant Extrusion

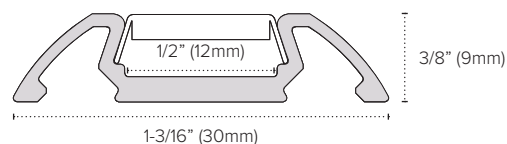
The Single Stant Premium Extrusion requires a 1-3/16" width and 3/8" height for installation. The sloped shoulders arch to the mounting surface on both sides offering a strong presence with a tailored look. This popular extrusion can be used with all Trulux Tape except Double Row for sleek, multi purpose lighting.

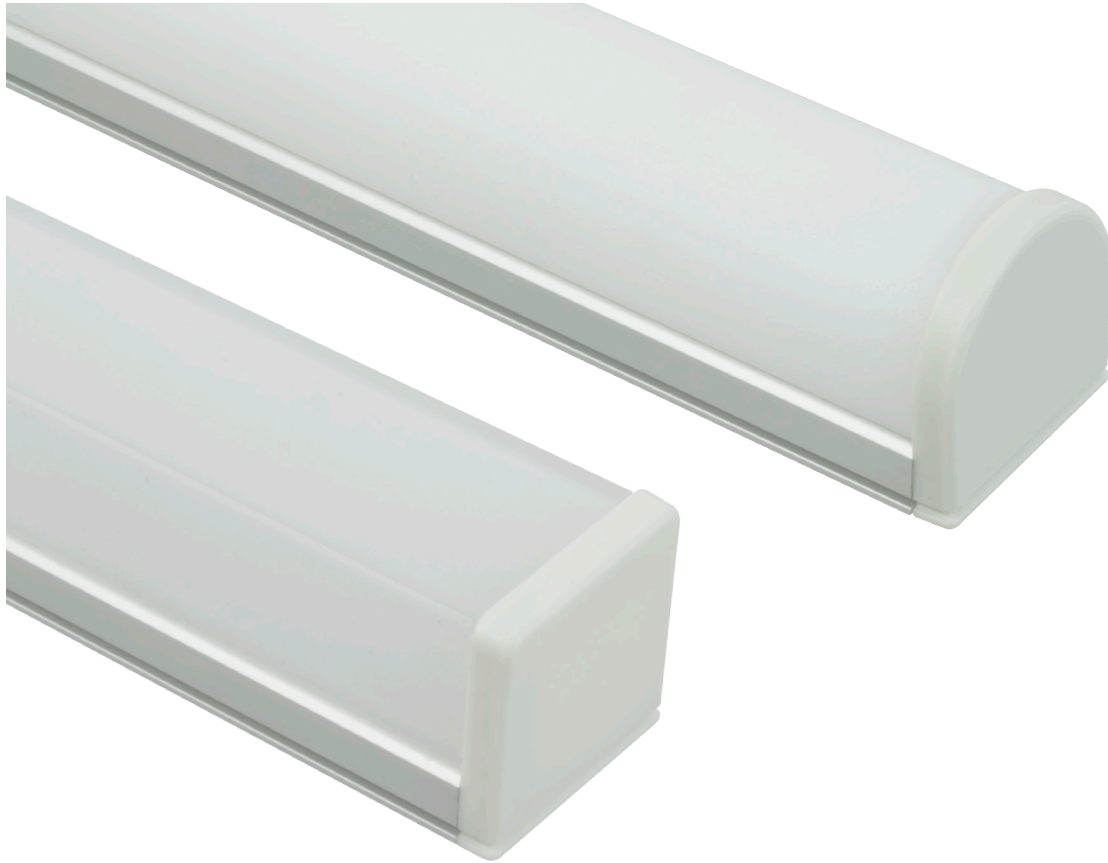
Best suited applications:

Display cases, window framing, shelving, cabinetry, accent lighting

Ordering Information

PE-SSTANT-1M	Single Stant Aluminum Extrusion
PE-UVSTANT-1M	Frosted Polycarbonate UV Lens
PE-SSTANT-END	Single Stant End Cap





Features

- Made of lightweight double anodized aluminum
- Frosted lens protects light source while evenly diffusing light
- Field cuttable extrusion and lenses
- Aluminum provides excellent heat dissipation
- End caps available for a tailored look
- Compatible with most Trulux Tape Light

Available Lengths

39-3/8" (1 meter)

Available Finishes



Anodized Aluminum

Compatible Tape Light

- Trulux Single Color
- Trulux Tunable CCT
- Trulux RGB / RGB+WW

TRULUX™ Turbo Extrusion

The impressive Turbo extrusion with lens and end caps resembles a low profile T5 luminaire when it is assembled. It allows two side-by-side rows of Trulux (except RGB+WW and Double Row which are too wide) to fit in its generous base, boosting light output and increasing coverage. Allow a 1" high by 1-1/16" wide clearance for either the rounded or squared lens style.

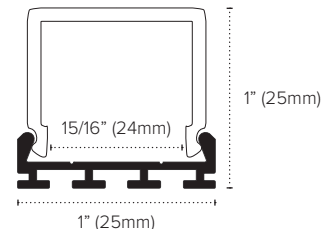
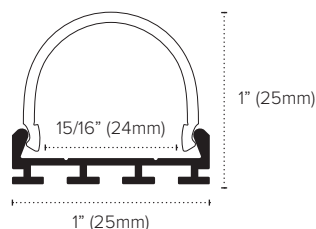
Best suited applications:

Offices, closets, food prep areas, workshops, shelving

Ordering Information

PE-TURBO-1M*	Turbo Aluminum Extrusion
PE-RTURBO-1M*	Round Frosted Acrylic Lens
PE-QTURBO-1M*	Square Frosted Acrylic Lens
PE-RTURBO-END*	Turbo Round End Cap
PE-QTURBO-END*	Turbo Square End Cap

*Turbo Extrusion is available as special order only. Please allow up to 2 weeks for order processing.





TURBO
TRULUX EXTRUSIONS

TASK LIGHTING

DOWNLIGHTING

LINEAR LIGHTING

ARCHITECTURAL LIGHTING

POWER SUPPLIES



Features

- Made of lightweight double anodized aluminum
- Frosted lens protects light source while evenly diffusing light
- Field cuttable extrusion and lens
- Aluminum provides excellent heat dissipation
- End caps provide a tailored look
- Mounting clips available for surface applications
- Compatible with most Trulux Tape Light

Available Lengths

- 39-3/8" (1 meter)
- 78-3/4" (2 meter)
- 118" (3 meter)

Available Finishes



Anodized Aluminum

Compatible Tape Light

- Trulux Single Color
- Trulux Tunable CCT (excludes Double Row)
- Trulux RGB

TRULUX™ Olin Extrusion

The Olin extrusion is sleek, slim and attractive. Use the UV lens and end caps to make a clean finished appearance. Standard surface E-CLIPs secure the extrusion to the surface for perpendicular light output; and the E-CLIP-45 allows angled placement (about 10° from perpendicular) for wall grazing effects, retail displays and task lighting.

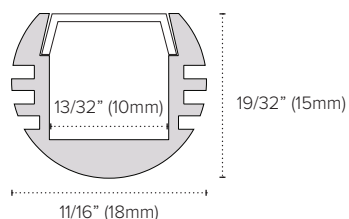
Best suited applications:

Display cases, wall grazing, shelving, accent lighting

Ordering Information

PE-OLIN-1M	Olin Aluminum Extrusion (1 meter)
PE-OLIN-2M*	Olin Aluminum Extrusion (2 meter)
PE-OLIN-3M*	Olin Aluminum Extrusion (3 meter)
PE-UVLENS-1M	Frosted Polycarbonate UV Lens
PE-OLIN-FEED	Olin End Cap w/hole
PE-OLIN-END	Olin End Cap
E-CLIP	Surface Mount Clip

*Olin Extrusion (PE-OLIN-2M & PE-OLIN-3M) are available as special order only. Please allow up to 2 weeks for order processing.



Surface Mount Clip



Features

- Made of lightweight non-anodized aluminum
- Included frosted lens protects light source while diffusing light
- Field cuttable extrusion and lens
- Aluminum provides excellent heat dissipation
- Optional end caps and mounting clips available
- Compatible with most Trulux Tape Light

Available Lengths

39-3/8" (1 meter)

Available Finishes



Anodized Aluminum

Compatible Tape Light

- Trulux Single Color
- Trulux Tunable CCT (excludes Double Row)
- Trulux RGB / RGB+WW

TRULUX™ Economy Extrusion

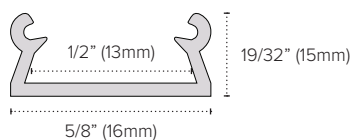
The Economy Extrusion requires a 5/8" width and 19/32" height for installation. Each one includes a frosted polypropylene cover which protects the LEDs from dust, and also hides direct view of LEDs, while diffusing the light. Use the EE1-END for a finished look. The E-CLIP is recommended for wooden mounting surfaces.

Best suited applications:

Display lighting, window framing, niches, shelving, cabinetry, accent lighting

Ordering Information

EE1-AAFR-1M	Economy Aluminum Extrusion
	Frosted Polypropylene Lens (included)
EE1-END	Economy End Cap
E-CLIP	Surface Mount Clip



Surface Mount Clip



Features

- Made of lightweight double anodized aluminum
- Frosted lens protects light source while evenly diffusing light
- Field cuttable extrusion and lenses
- Aluminum provides excellent heat dissipation
- End caps provide a tailored look
- Mounting clips available for surface applications
- Compatible with most Trulux Tape Light

Available Lengths

39-3/8" (1 meter)

Available Finishes



Anodized Aluminum

Compatible Tape Light

- Trulux Single Color
- Trulux Tunable CCT (excludes Double Row)
- Trulux RGB / RGB+WW

TRULUX™ Pro 45 Extrusion

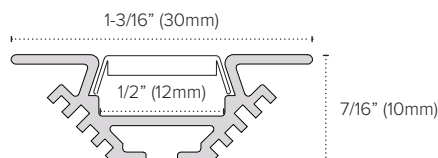
Double anodized, with high light transmitting lens options (sold separately) and PRO 45 ends for a finished look. This angular extrusion has a stronger, more refined presence than the other 45 degree channels, and can be assembled to be used outdoors. The PRO 45 really shines in window framing and as decorative accent lighting where the profile has visibility, but it also works for display cases and cabinets.

Best suited applications:

Display cases, window framing, shelving, cabinetry, accent lighting

Ordering Information

PE-PRO45-1M	Pro 45 Aluminum Extrusion
PE-PROLENS-FR-1M	Frosted Polycarbonate Lens
PE-PROLENS-UV-1M	Frosted Polycarbonate UV Lens
PE-PRO45-END	Pro 45 End Cap



PRO 45
TRULUX EXTRUSIONS

TASK LIGHTING

DOWNLIGHTING

LINEAR LIGHTING

ARCHITECTURAL LIGHTING

POWER SUPPLIES





Features

- Made of lightweight high quality aluminum
- Frosted lens protects light source while evenly diffusing light
- Extrusion and lenses are field cuttable
- Aluminum provides excellent heat dissipation
- End caps provide a tailored look
- Mounting clips available for surface applications
- Compatible with most Trulux Tape Light

Available Lengths

39-3/8" (1 meter)

Available Finishes



Anodized Aluminum

Compatible Tape Light

- Trulux Single Color
- Trulux Tunable CCT (excludes Double Row)
- Trulux RGB

TRULUX™ Premium 45 Extrusion

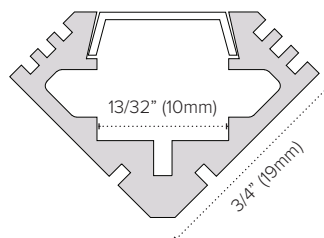
A practical and versatile profile for corners, the Premium 45 can be sealed for outdoor use, if needed. Otherwise it is an indoor extrusion. Use to light cabinets, glass display cases and interior window framing. The E-CLIP-45 is highly recommended for wood mounting surfaces.

Best suited applications:

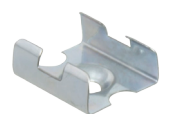
Display cases, window framing, shelving, cabinetry, accent lighting

Ordering Information

PE-AA45-1M	Premium 45 Aluminum Extrusion
PE-UVLENS-1M	Frosted Polycarbonate UV Lens
PE-FOCLENS-1M	Beam Angle Focusing Lens (10°)
PE-AA45-END	Premium 45 End Cap
E-CLIP-45	Surface Mount Clip



Focusing Lens



Surface Mount Clip



Features

- Made of lightweight non-anodized aluminum
- Included frosted lens protects light source while diffusing light
- Extrusion and lens are field cuttable
- Aluminum provides excellent heat dissipation
- End caps provide a tailored look
- Mounting clips available for surface applications
- Compatible with most Trulux Tape Light

Available Lengths

39-3/8" (1 meter)

Available Finishes



Anodized Aluminum

Compatible Tape Light

- Trulux Single Color
- Trulux Tunable CCT (excludes Double Row)
- Trulux RGB

TRULUX™ Economy 45 Extrusion

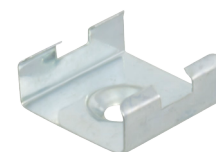
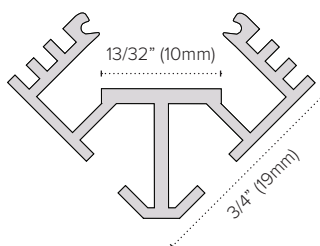
An economical version of the Premium 45, since it includes a protective polypropylene lens to lightly diffuse light and protect the Trulux tape from dust. A good solution for narrow spaces. Use the E-CLIP-45 for wood mounting surfaces.

Best suited applications:

Display cases, window framing, shelving, cabinetry, accent lighting

Ordering Information

EE45-AAFR-1M	Economy 45 Aluminum Extrusion
	Frosted Polypropylene Lens (included)
EE45-END	Economy 45 End Cap
E-CLIP-45	Surface Mount Clip



Surface Mount Clip



Features

- Made of lightweight double anodized aluminum
- Frosted lens protects light source while evenly diffusing light
- Field cuttable extrusion, grip strips and lens
- Grip Strip Installation Tool recommended
- Optional end caps are available
- Place tape light in bottom slot to illuminate step overhang or in top front grip slot for upward illumination (Trulux Bendable only for top front grip slot)
- Compatible with most Trulux Tape Light

Available Lengths

39-3/8" (1 meter)

Available Finishes



Anodized Aluminum

Compatible Tape Light

- Trulux Single Color
- Trulux Tunable CCT (excludes Double Row)
- Trulux RGB
- Trulux Bendable

TRULUX™ Step Extrusion

Double-anodized and heavy gauge, the Step combines safety on multiple levels. Not only does it provide stair lighting, it also features two channels with rubber strips for anti-slip treads.

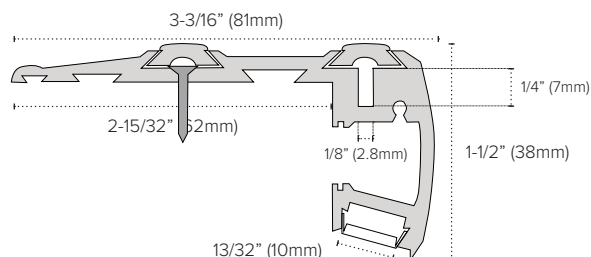
Best suited applications:

Step lighting, safety lighting, theater stairs, high traffic areas

Ordering Information

PE-STEP-1M*	Step Aluminum Extrusion
PE-UVLENS-1M	Frosted Polycarbonate UV Lens
PE-STEP-GRIP*	Grip Strip
PE-STEP-RIGHT*	Step End Cap (right)
PE-STEP-LEFT*	Step End Cap (left)
PE-STEP-TOOL*	Grip Strip Installation Tool

*Step extrusion is available as special order only.
Please allow up to 2 weeks for order processing.





TRULUX EXTRUSIONS

STEP

TASK LIGHTING

DOWNLIGHTING

LINEAR LIGHTING

ARCHITECTURAL LIGHTING

POWER SUPPLIES