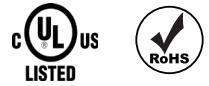


INSTALLATION INSTRUCTIONS
MLUX-30 & MLUX-40



⚠ WARNING

These products may represent a possible shock or fire hazard if improperly installed or attached in any way. Products should be installed in accordance with these instructions, current electrical codes, and/or the current National Electric Code (NEC).

⚠ WARNING

Use this fixture with included connection kit and 24V DC power supply only. Any other power feed may damage the fixture. Factory warranty will be void if used with any driver other than the recommended driver series. To reduce the risk of fire, electric shock or injury to persons, use this flexible light only with American Lighting recommended drivers, controllers, power connectors, splices and extensions.

⚠ WARNING

To reduce the risk of fire, electric shock or injury to persons, make sure that the electrical power to the system is disconnected at the source prior to installation or any servicing.

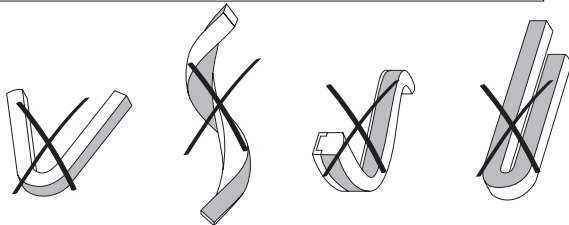
⚠ WARNING

The minimum bend radius of MLUX-30/40/RGB series product is 12cm or 4.7". Do not twist, drop, hang, sag, or bend product in any way other than intended. See below for reference. Never fold Microlux or bend past the minimum bending radius whether lighted or unlighted.

⚠ WARNING

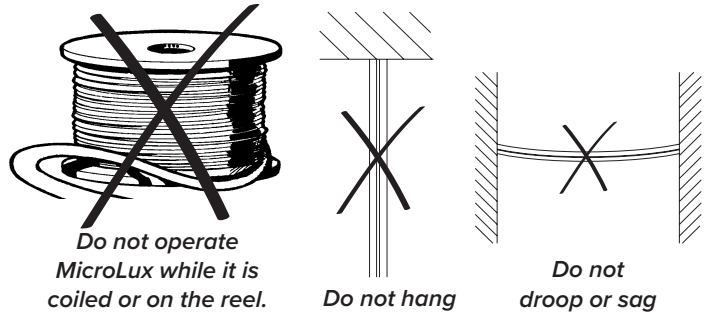
When using outdoor portable lighting products, basic safety precautions should always be followed to reduce the risk of fire, electric shock, and personal injury, including the following:

- Use dielectric grease and shrink tube at all power connections, including end cap when using outdoors.
- Use ground fault circuit interrupter (GFCI) protection on the circuit(s) or outlet(s) when using outdoors.
- Use only UL approved outdoor extension cords, such as type SW, SOW, STW, STOW, SJW, SJOW, SJTW, or SJTOW. This designation is marked on the jacket of the extension cord.



SAFETY INFORMATION

- Read all installation instructions before beginning; if not qualified, do not attempt installation. Contact a qualified electrician.
- To reduce the risk of fire, electric shock, or injury to persons, pay close attention to this manual and stay within its guidelines when using this product. Save these instructions for future use.
- Do not cover this product as the covering may cause rope to overheat, melt, or ignite.
- Uncoil flexible light prior to plugging in. Do not operate Microlux on the reel, nor while it is coiled.
- This IP65 rated flexible light is suitable for wet locations, but not intended for submersion. Do not submerge flexible light in liquids, or use the product in the vicinity of standing water or other liquids, or where water can accumulate. IP65 rating is void once product is cut. Cut product is rated IP54 and intended for indoor, dry locations only.
- Do not route the cord or flexible light through walls, ceilings, doors, windows, or any similar part of the building structure.
- Do not install on gates or doors, or where subject to continuous flexing.
- Do not install in tanks or enclosures of any kinds.
- Do not install near flammable liquids or other flammable materials.
- Secure flexible light using only the mounting clips (MLUX-CLIPS) provided or factory recommended mounting track (MLUX-CHAN) (sold separately).
- Do not secure this product or its cord with staples, nails, or like means that may damage the outer jacket or cord insulation.
- Do not use if there is any damage to the flexible light, diodes or power cord insulation; inspect periodically.
- Follow instructions carefully when cutting MicroLux. Ensure all end caps and cut locations are properly sealed with appropriate silicone or PU type glue. 24V MicroLux can only be cut at specific intervals as indicated by the cutting marks printed on the bottom of the PU housing (3.94" or 10cm). Failure to cut at a cut mark will result in a loss of light. Before making any cuts or attaching any power cords or jumpers, be sure power is disconnected at the source!
- This product is designed for use by a qualified installer.
- This product is for decorative use only. Not to be used by children as a toy. Keep out of reach of small children.
- Do not exceed 5 meters or 16.4 feet maximum run distance in any single inter-connected run.
- Size your 24V DC driver appropriately for your run distance. Be sure not to load a driver to 100% as this will reduce its efficiency; a 90% maximum load is recommended. Recommended drivers include ADPT-DRJ, LED-DR, and ELV series.
- The rated ambient temperature range for NeoFlux is -30°C (-22°F) to 45°C (113°F). Freezing temperatures may cause product rigidity.



PRODUCT INFORMATION

Microlux 16.4ft reels include (1) attached 3ft power connector with bare wire leads and mounting clips with screws. Mount microlux using clips (MLUX-CLIPS, included or sold separately) or channel (MLUX-CHAN-3A or MLUX-CHAN-3B, sold separately). Additional accessories for MicroLux static white include a splice kit (MLUX-SPL2), 6 foot linking jumper (MLUX-JUMP2-.5), a 12" linking jumper (MLUX-JUMP2-2), end caps (MLUX-END), mounting clips (MLUX-CLIPS), and mounting channel (MLUX-CHAN-3A full profile or MLUX-CHAN-3B half profile), all sold separately.

CARE AND MAINTENANCE:

1. For cleaning, use a soft, dry or damp cloth. Do not use harsh chemicals or abrasives.

INSTALLATION INSTRUCTIONS

MLUX-30 & MLUX-40

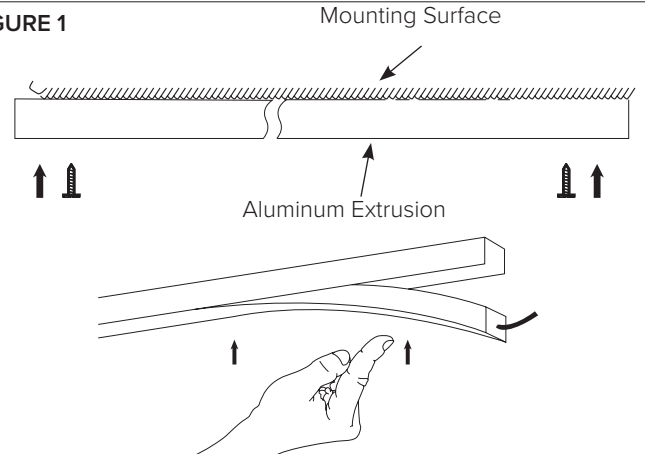


MOUNTING MICROLUX (Figure 1):

Disconnect power at the source prior to attempting installation or service of product.

1. Determine the desired locations and lengths of MicroLux to be installed. Use this information to determine locations and sizes of 24V DC power supplies.
2. Install mounting clips or aluminum channel (MLUX-CLIPS, MLUX-CHAN-3A., or MLUX-CHAN-3B) by screwing the clip or channel into a solid, sturdy surface. See Figure 1. Mounting clips should be evenly spaced and be a maximum of 3 feet apart. The distance between two parallel lines of MicroLux must be at least 1/2".
3. Gently push the MicroLux into the mounting clips or channel starting at the beginning of the run and moving down the line towards the end. Leave enough room for the power cable to reach the next piece of MicroLux. End caps and connection points cannot be installed within the aluminum channel. Ensure the MicroLux does not sag and does not bend more than the maximum bend radius of 12cm at any point.

FIGURE 1

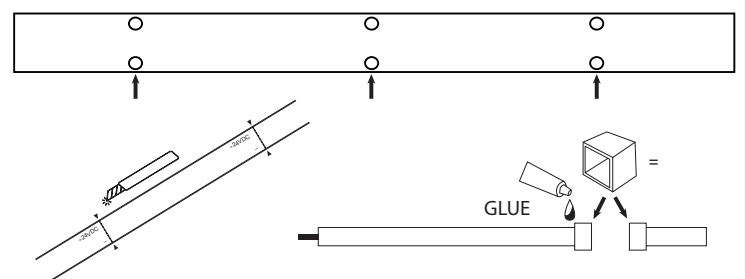


CUTTING MICROLUX (Figure 2):

Disconnect power at the source prior to attempting installation or service of product. IP65 rating is void once product is cut. DIY connections are intended for indoor, dry location only.

1. Determine the desired location of the cut by powering on the flexible light and flipping the product to the underside. The cut-marks are clearly illuminated. See Figure 2.
2. Mark the desired cut location on the bottom of the MicroLux (3.94" or 10cm).
3. Disconnect power from product prior to cutting.
4. Using an appropriate utility blade, gently cut straight down through the body of the MicroLux, from the top, directly over the cutting increment mark on the bottom of the MicroLux. Do not use scissors or bolt cutters to cut MicroLux. Do not cut MicroLux diagonally or horizontally as this may damage the product.
5. Seal cut-end using included end cap and an appropriately rated silicone or PU glue (not included).

FIGURE 2



CONNECTING POWER

OR LINKING MICROLUX WITH A JUMPER (Figures 3-4):

Disconnect power at the source prior to attempting installation or service of product. Use this fixture with included power cable and 24V DC power supply only. Any other power feed may damage the fixture.

1. Slide transparent housing shield onto MicroLux. See Figure 3.
2. Spread apart the walls of the metal bracket. Lower and pinch tightly closed snugly against the end of fixture.
3. Slide transparent housing shield over the metal bracket.
4. Install the plug connector so the conductive pins make contact with the underside of the tape. Note polarity of connection.
5. Identify the polarity by looking at the bottom of the MicroLux and how it aligns to the connector. See Figure 4.
6. Connect wires to a 24V DC driver following polarity determined in step 5. MicroLux is also compatible with Trulux controllers/receivers.
7. If connecting to another section of MicroLux via Jumper, mirror steps 1-4 above on additional sections making sure to align polarity.

FIGURE 3

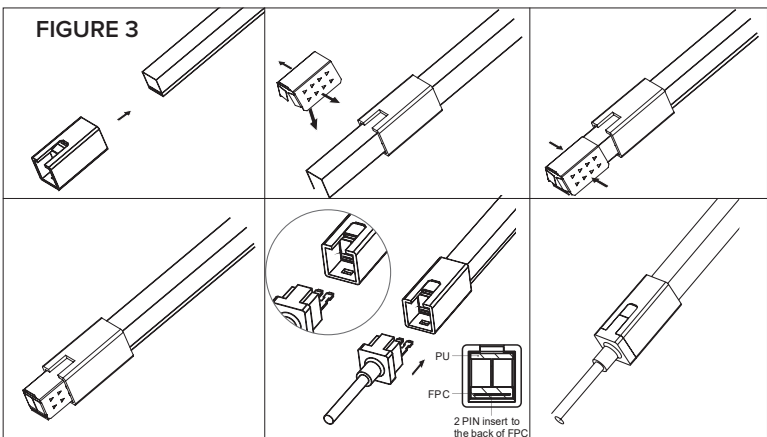
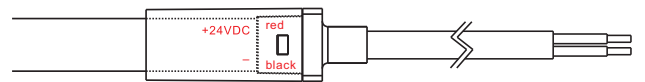


FIGURE 4



LINKING MICROLUX WITH A SPLICE CONNECTOR (Figure 5):

Disconnect power at the source prior to attempting installation or service of product. Use this fixture with included power cable and 24V DC power supply only. Any other power feed may damage the fixture.

1. Align two sections of MicroLux so the polarity is matched.
2. Remove a small section of the underside of either piece, about a 3/8" long. NOTE: DO NOT DAMAGE COPPER CONDUCTOR OR FIXTURE WILL CEASE FUNCTION.
3. Butt the ends of the MicroLux sections together, positive to positive and negative to negative.
4. Cover the light emitting faces with the three walled transparent shielding. The butt joint should be centered.
5. Snap the bottom of the shielding into place.

FIGURE 5

