

LED BRICK LIGHT

100-277V 3000K Recessed Light

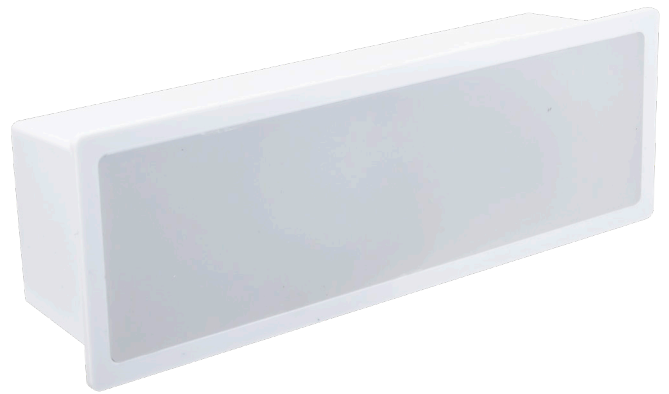
Line voltage (100-277V) version of the classic brick light with Warm White LEDs available in one style and two finishes. Metal rough-in housing has integrated rubber gasket, threaded knockouts and built-in ground wire. Two faceplate options are available. Each includes an Allen/hex wrench and tamper proof screws for vandal resistance, and matching screw covers for a finished look.

- Die-cast zinc-magnesium rough-in housing with durable painted finish and three 1/2" NPS knock-outs with plugs
- Sturdy plastic, fully sealed light module with built-in driver for AC input
- 3000K color temperature
- Choose from a classic faceplate style in two popular finishes
- Durable cast zinc-magnesium faceplate with powder coated finish (plated for stainless steel)
- cETLus Listed
- 30,000 hours rated life

PROJECT:
TYPE:
LOCATION:
CATALOG NUMBER:



BRICK LIGHT ROUGH-IN HOUSING



BRICK LIGHT LED MODULE



HORIZONTAL LOUVER STAINLESS



HORIZONTAL LOUVER DARK BRONZE



BRICK LIGHT SERIES QUICK SPECS

VOLTAGE	100-277V AC, 60Hz
WATTAGE	2W @120V / 3.3W @277V
LUMENS	135Lm (Light Module)
CCT OPTIONS	3000K
CRI	70+
BEAM ANGLE	N/A
MOUNTING	Recessed Mount
RATING	cETLus Listed (Wet Location)
DIMMING	Non-Dimmable
OPERATING TEMP	-10°C (14°F) to 60°C (140°F)
RATED LIFE	30,000 Hours

BRICK LIGHT SERIES ORDERING INFORMATION

ITEM NUMBER	STYLE	WATTAGE	LUMENS	CCT
BB2-LED-WW	Brick Light Module	3W	135Lm	3000K
BB2-HSG	Rough-In Housing (required)	N/A	N/A	N/A
BB2-HL-SS	Horizontal Louver Faceplate - Stainless Steel	N/A	N/A	N/A
BB2-HL-DB	Horizontal Louver Faceplate - Dark Bronze	N/A	N/A	N/A

BRICK LIGHT SERIES DIMENSIONS

BRICK LIGHT

