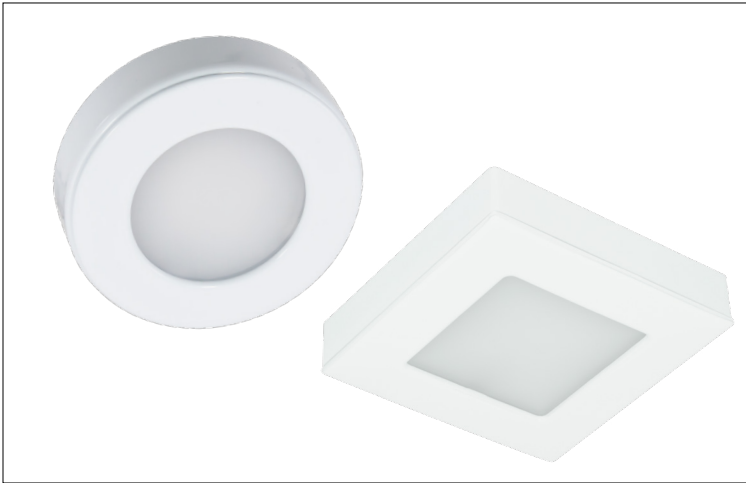


24V | OMNI TUNABLE Puck Light

PROJECT: _____ TYPE: _____

LOCATION: _____ CAT: _____



Description

Low-voltage steel puck lights in round or square with three finish options and 2700K-6000K tunable LED Light with 90+CRI

Features

- Round or square profile
- Zinc alloy light housing with aluminum heat sink
- Stamped steel surface collar with powder coat finish to match
- Spring steel clips secure housing in surface collar
- Diffuse, polycarbonate lens
- Available in bulk pucks or three puck kits (kits in round WH only)
- Bulk pucks are designed for hardwire installations using Trulux Tunable controller + receiver combo with LED-DR driver series (sold separately)
- Kits are designed for plug-in installations using included Tunable controller and decoder

Mounting

Surface or recess mount; mounting screws included

Applications

Display shelving, under-cabinet, task lighting, accent lighting

Warranty

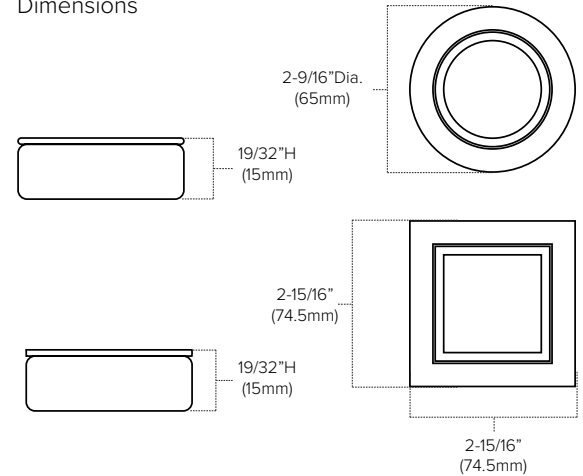
3 years

Technical Information



Style	Round			Square		
	White	Nickel	Black	White	Nickel	Black
Finish	White	Nickel	Black	White	Nickel	Black
Voltage	24V DC					
CCT	2700K-6000K Tunable CCT					
CRI	90+					
Wattage	2.8W per puck			3W per puck		
Lumens	135Lm	130Lm	126Lm	150Lm	145Lm	140Lm
Max Run	Dependent upon capacity of driver					
Beam Angle	120°					
Dimming	5-100% (requires receiver + Trulux Control)					
Rating	Dry location					
Rated Life	30,000 hours					

Dimensions

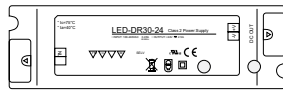


Trulux Controller Set-up



Push Dial Controller
(Single zone)

+



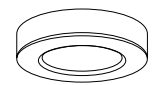
LED-DR 24V Driver
(30W, 60W, 100W, 150W)

+

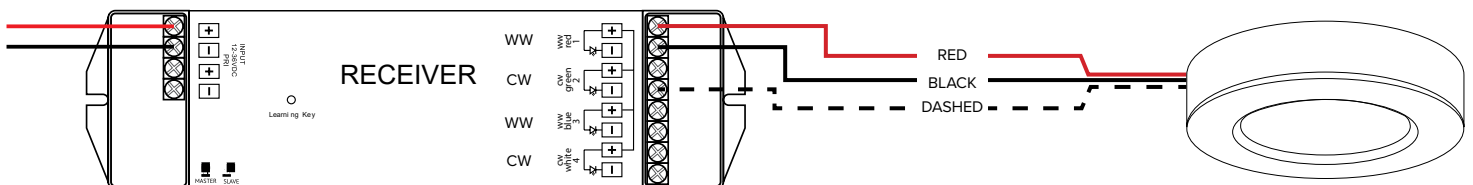


Trulux RF Receiver
(Required)

+

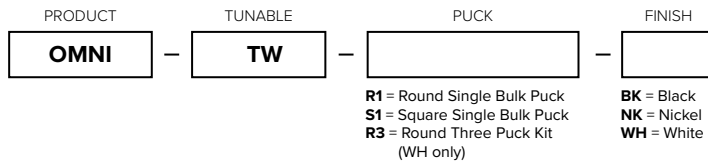


Omni Tunable Puck



Ordering Information

OMNI Tunable Pucks



Bulk Pucks Include:

- (1) Omni Puck with 78" lead wire
- Mounting hardware

Three Puck Kits Include:

- (3) Omni round white pucks with 78" lead wire
- (1) 24V DC plug-in driver
- (1) Receiver with 3-port hub and remote control
- Mounting hardware

Example Part # **OMNI-TW-R1-BK**



Tunable CCT Control Options

Image	Part Number	Description
Trulux Controllers		
	TWRF-4Z	Trulux Tunable CCT Radio Frequency Control; Touch Control Backlit Wall Mount; 1-4 zones and 3 scenes; 12-24V DC Operation; Requires the use of a Trulux Radio Frequency receiver
	TWRF-BATT	Trulux Tunable CCT Radio Frequency Control; Push Dial Wall Mount; Single zone; Battery operated (CR2032 included); Requires the use of a Trulux Radio Frequency receiver
	TWRF-BATT-TT	Trulux Tunable CCT Radio Frequency Control; Push Dial Table Top; Single zone; Battery operated (CR2032 included); Requires the use of a Trulux Radio Frequency receiver
	TWRF-3AAA	Trulux Tunable CCT Radio Frequency Control; Handheld Remote; 1-4 zones and 3 scenes; Battery operated (3xAAA not included); Requires the use of a Trulux Radio Frequency receiver
	Trulux App	Trulux Mobile Application; Mobile Phone or Tablet ready, interactive dial controls; Available on Google Play or the App Store; Requires the TruHub (RF-WiFi-8) router and receivers (REC-5A-4Z) for 2-8 zones or the RF + WiFi receiver (REC-5A-4Z-WiFi) for single zone applications
Trulux Receivers		
	REC-5A-4Z	Trulux Radio Frequency Receiver; Sync multiple receivers to a single control; 4 x (60-180W) 5A per channel; 12V/24V DC input; For use with Trulux Radio Frequency control or Trulux TruHub plus Trulux App
	REC-5A-4Z-WIFI	Trulux Radio Frequency + WiFi Receiver; Sync multiple receivers to a single control; 4 x (60-180W) 5A per channel; 12V/24V DC input; For use with Trulux Radio Frequency Control or Trulux App
	WIFI-RF-8	TruHub WiFi Hub Control; converts WiFi to RF for 2-8 zones; For use with REC-5A-4Z and Trulux App

Recommended Power Supplies

Part Number	Description	Application	Primary / Secondary	Total Wattage	Listing	Dimensions
For Trulux Controlled Systems						
LED-DR30-24	Constant voltage hardwire driver	Dry location	100-240 AC / 24V DC	30W	cURus	6-1/2"x1-3/4"x1-3/16"
LED-DR60-24	Constant voltage hardwire driver	Dry/Damp location	100-240 AC / 24V DC	60W	cURus	7-13/16"x1-3/4"x1-5/8"
LED-DR100-24	Constant voltage hardwire driver	Dry/Wet location	100-240 AC / 24V DC	100W	cURus	7-5/8"x2-1/8"x1-1/2"
LED-DR150-24	Constant voltage hardwire driver	Dry/Wet location	100-240 AC / 24V DC	150W	cURus	9"x2-5/8"x1-1/2"